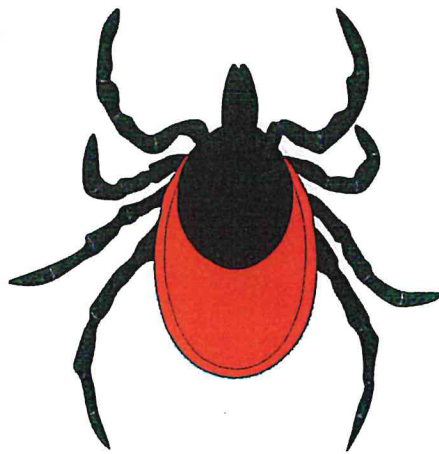
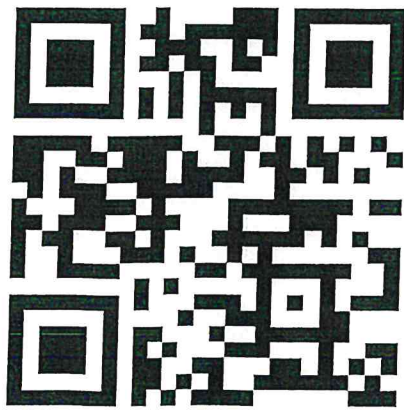


RUTGERS

# NJ TICKS 4 SCIENCE!

See a Tick?  
Send a Tick!



@NJTICKS4SCIENCE



**Want to know if your tick is carrying Lyme? Send it to us! We'll test it!**

Our goal is to understand the changing distribution of ticks and tick-borne pathogens across New Jersey.  
With your help, we will learn where and when people are exposed to ticks and tick-borne diseases!



# BE TICK SMART

## Where Do Ticks Live?

They live in shady and moist areas usually on the ground level. They cling to tall grass and low shrubs.

## Checking For Ticks

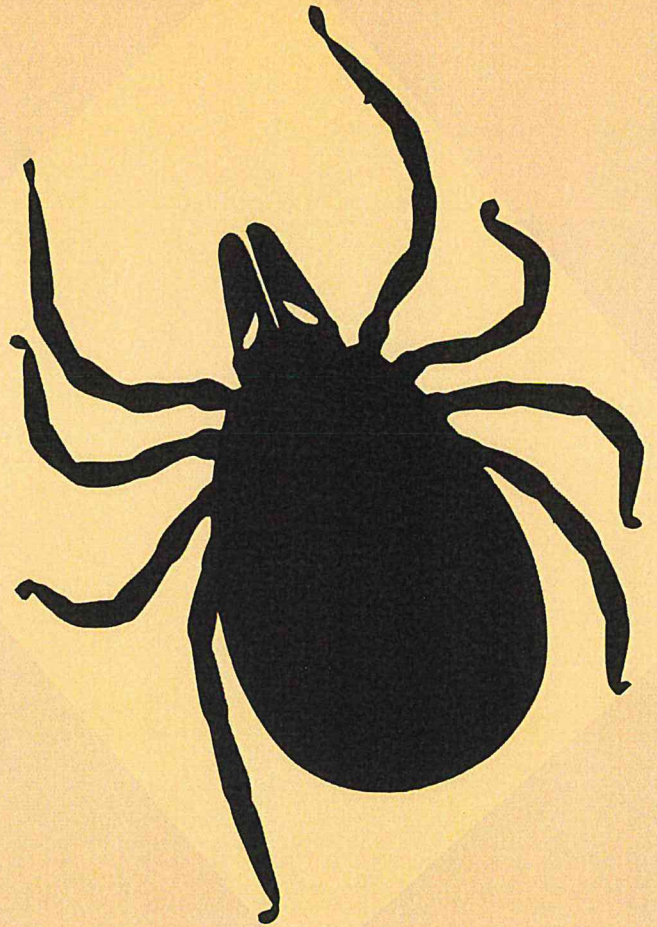
Under the arms, around the ears, inside the belly button, back of the knees, around hair, between the legs, and around the waist.

## Removing a Tick

Use clean tweezers to grasp the tick. Pull upward with steady pressure. After removing the tick, clean the bite area and your hands with rubbing alcohol or soap and water.

## Symptoms of Tickborne Illness

Fever, headache, fatigue, and skin rash (erythema migrans).



## Ticks On Pets

Dogs are very susceptible to tick bites and tickborne diseases. Vaccines are not available. Use a tick preventive product on your dog.

**Sussex County Office of Public Health Nursing**



(973)579-0570 ext. 1275



scphn@sussex.nj.us

